

Cynomolgus PD-1/PDCD1 Protein

Cat. No. PD1-CM201

Description

Source	Recombinant Cynomolgus PD-1/PDCD1 Protein is expressed from HEK293 with hFc tag at the C-Terminus. It contains Pro21-Gln167.
Accession	B0LAJ3
Molecular Weight	The protein has a predicted MW of 42.4 kDa. Due to glycosylation, the protein migrates to 55-70 kDa based on Bis-Tris PAGE result.
Endotoxin	Less than 1EU per μg by the LAL method.
Purity	> 95% as determined by Bis-Tris PAGE > 95% as determined by HPLC

Formulation and Storage

Formulation	Lyophilized from 0.22 μm filtered solution in PBS (pH 7.4). Normally 8% trehalose is added as protectant before lyophilization.
Reconstitution	Centrifuge the tube before opening. Reconstituting to a concentration more than 100 $\mu\text{g}/\text{ml}$ is recommended. Dissolve the lyophilized protein in distilled water.
Storage	-20 to -80°C for 12 months as supplied from date of receipt. -80°C for 3 months after reconstitution. Recommend to aliquot the protein into smaller quantities for optimal storage. Please minimize freeze-thaw cycles.

Background

Programmed cell death protein 1, also known as PD-1 and CD279, is a protein found on the surface of cells that has a role in regulating the immune system's response to the cells of the human body by down-regulating the immune system and promoting self tolerance by suppressing T cell inflammatory activity.

Assay Data

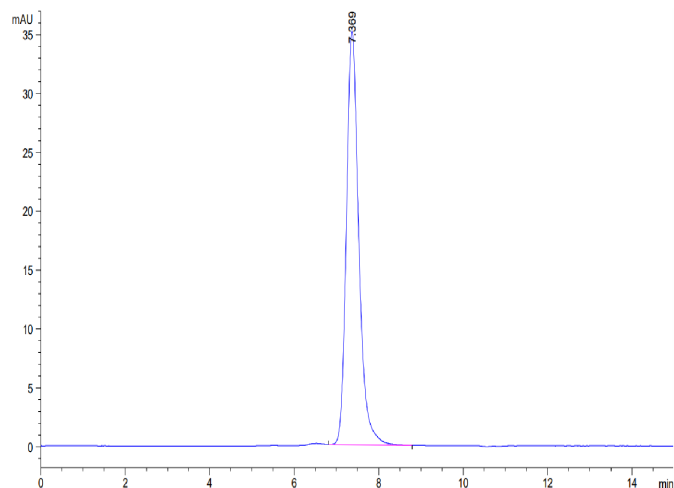
Bis-Tris PAGE



Cynomolgus PD-1 on Bis-Tris PAGE under reduced conditions. The purity is greater than 95%.

SEC-HPLC

Assay Data

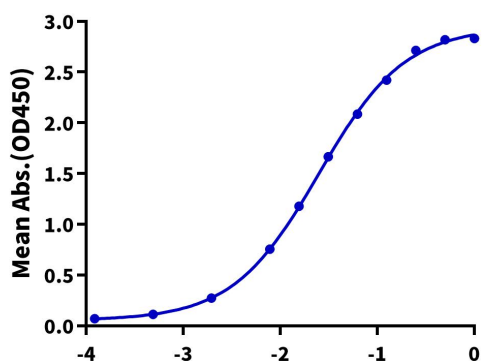


The purity of Cynomolgus PD-1 is greater than 95% as determined by SEC-HPLC.

ELISA Data

Cynomolgus PD-1, hFc Tag ELISA

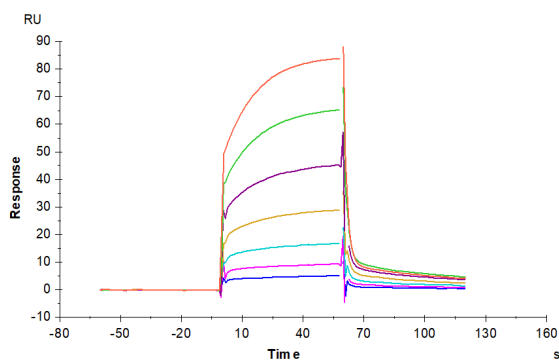
0.2µg Cynomolgus PD-1, hFc Tag Per Well



Immobilized Cynomolgus PD-1, hFc Tag at 2µg/ml (100µl/well) on the plate. Dose response curve for Biotinylated Anti-PD1 Antibody, hFc Tag with the EC50 of 25.0ng/ml determined by ELISA (QC Test).

Log Biotinylated Anti-PD-1 Antibody, hFc Tag Conc.(µg/ml)

SPR Data



Cynomolgus PD-1, hFc Tag captured on CM5 Chip via Protein A can bind Cynomolgus PD-L1, His Tag with an affinity constant of 1.28 µM as determined in SPR assay (Biacore T200).